

Multilingual Educators **META** Transforming Achievement

# Identity, Innovation, & Inspiration

Designing for  
Emergent Multilingual Learner Genius

Saturday, March 2, 2024

Stanislaus County Office of Education • 1100 H Street • Modesto, CA 95354

# Welcome

Dear Friends, Colleagues, and Advocates:

Welcome to *Identity, Innovation, & Inspiration*. Today will be an inspiring and compelling day of learning, collaborating, networking, and celebrating as we explore how we can design our programs, pathways, pedagogy, and practice to support and enhance the genius that lives in our Emergent Multilingual Learners and how actively valuing their identities and multilingual capacities opens the door to the possibility, promise, and potential of success in and beyond the classroom.

Representing your META leadership, I bring you our highest hopes for a re-awakening of our considerable power as Central Valley educators to transform the schooling and life trajectories of our students, especially those who continue to be underserved: Emergent Multilingual Learners. To successfully accomplish this, we must be willing to actively live a collaborative vision that positions our schools and communities as identity-safe and culturally and linguistically sustaining learning spaces that intentionally foster high intellectual performance for each student. This is not beyond our reach. While we can certainly take individual responsibility to make sure this happens in our own classrooms, when we are united in our efforts, we can become powerhouse models in action of what it means to hold a future-oriented vision for our students and communities.

So, our aim today, and in the future beyond our conference, is to support and nurture you in your continuing efforts to:

1. Affirm and support students in their multiple identities by creating environments where students feel safe and affirmed in being who they are and who they aspire to be.
2. Respect, activate, and fully develop students' languages and cultures as personal and collective resources by validating, using, and expanding students' full multilingual repertoires as essential to their social-emotional and academic growth.
3. Engage students in successful high-level intellectual performances by connecting students' identities with academic engagement and building affirming pedagogies of high academic and cognitive challenge and success.

I sincerely hope that today, in this brief time we have together, we will generate enough new energy and passion to support us as we return to our local schools and communities in the days that follow. We are the ones our students have been waiting for!

Francisca S. Sánchez, META President

# Dedication



## Tove Skutnabb-Kangas

July 6, 1940-May 29, 2023

We are dedicating this conference to our dear friend and colleague, Tove Skutnabb Kangas, who passed away tragically on May 29, 2023. Tove embodied META's mission and vision of supporting students to pursue their higher education academic goals and capacitate themselves to carry out her legacy as proponents of linguistic human rights and social justice for all.

For those of us who knew her, her unexpected death remains a tragic and inexplicable loss that we carry in our hearts. We can say that she was a linguist, a researcher, a human and language rights advocate. We can acknowledge that she was a teacher, a writer, an intellectual, an activist. These labels, while all true and deserved, barely skim the surface of her beautiful being. She was so much more than those at the edges of her life experienced. She was a true hero, fierce and uncompromising; she was a champion who lived a life of love and responsibility, who stood strong for all those whose voices and lives were often silenced and even made invisible by those more powerful.

In the California context, her work profoundly impacted the design of a framework for the education of language minority students that took place in the '80s. Beyond that, her monumental and magnificent body of work --- she was indefatigable --- continues even now to shape our thinking. Those of us working in the field of multilingualism and multilingual education are deeply familiar with her work and hold her in the highest of esteem. Sometimes this is the only way we know the giants of Tove's caliber. Some of us had the privilege of knowing her on a personal level as well, however, and this has enriched our lives immeasurably.

In recognition of her deep commitment to the work we at META strive to accomplish, we are honoring her at this conference and by awarding this year's META student scholarship in her name. Her passing remains a tragedy; yet there is solace in recognizing that as a force majeure, a north star like no other, Tove will continue to shine bright, and her lasting memory, written in the sky, will provide us with an enduring strength to continue her work. Her spirit and beauty are with us always.



3

Identity, Innovation, & Inspiration

# Table of Contents

Welcome	2
Dedication	3
Agenda	5
Keynotes	8
Workshop Sessions I	10
Workshop Sessions II	13
About META	17
Sponsors	18
Facilities Map	19



4 Identity, Innovation, & Inspiration

# Agenda

8:00

REGISTRATION  
MORNING REFRESHMENTS

8:30

WELCOME (Board Room)  
Brenda Insurriaga, ELA/ELD Project Coordinator  
Stanislaus County Office of Education

Rosa Molina  
Association of Two-way Dual Language Education (ATDLE)

INTRODUCTIONS/ACKNOWLEDGEMENTS & OVERVIEW OF THE DAY

Francisca Sánchez, President  
Multilingual Educators Transforming Achievement (META)

FEATURED SPEAKER

Dr. Jim Cummins  
Telling It Like It Is: Academic Achievement, Literacy Engagement,  
and Identity Investment among Multilingual Learners

10:00

WORKSHOP SESSIONS I

1. Creating a Linguistically & Culturally Sensitive Mathematics Community  
Matthew Haber (Knights Ferry)



5

Identity, Innovation, & Inspiration

# Agenda

## WORKSHOP SESSIONS I (CONTINUED)

2. Cultivating Excellence: Transforming a District with Shared Vision & Collaboration  
Anabolena DeGenna & Aracely Fox (Chatom)
3. Advocacy and Action: Opportunities to Make a Difference for EMLs  
Cristina Salazar & Manuel Buenrostro (Shiloh)

## 11:30 LUNCH

Pick up your boxed lunches in the second floor foyer.

11:50

## SPECIAL PRESENTATION

Honoring Tove Skutnabb-Kangas

## KEYNOTE SPEAKER

Dr. Milton Chen

The "Fierce Urgency of Now" for Multilingual Education

1:00

## WORKSHOP SESSIONS II

1. From Oracy to Literacy: The Bilingual Journey  
Charlene Fried & José Luis Pérez (Knights Ferry)
2. Supporting Scientific Argumentation Skills in Elementary Science Students  
Emily Weiss (Graton)



6

Identity, Innovation, & Inspiration

# Agenda

## WORKSHOP SESSIONS II (CONTINUED)

3. We Must all Be Leaders in the Work of Dual Language Immersion Education!  
Rosa Molina (Chatom)

2:45

## KEYNOTE (Board Room)

Jim Cummins

Closing the Circle: Identity, Innovation, & Inspiration

## DRAWINGS/PRIZES

## CLOSING REMARKS

Francisca Sánchez

The Power of ME, the Power of WE

4:00

## ADJOURNMENT



7

Identity, Innovation, & Inspiration

# Keynote Speakers

## OPENING KEYNOTE

Dr. Jim Cummins

Telling It Like It Is: Academic Achievement, Literacy Engagement,  
& Identity Investment among Multilingual Learners

Jcummins320@gmail.com



We live in an era of escalating disinformation. When disinformation is targeted at education, it (intentionally) robs multilingual, racialized, and low-income students of life opportunities. The presentation will review what we know about the educational conditions and initiatives that promote academic achievement among these groups of students, highlighting the importance of engaging students' multilingual abilities, maximizing literacy engagement, and enabling them to use their languages powerfully for identity-affirming purposes.

**JIM CUMMINS** –Professor Emeritus at the Ontario Institute for Studies in Education, University of Toronto. His research focuses on literacy development in educational contexts characterized by linguistic and socioeconomic diversity. In numerous articles/books, he has explored the nature of language proficiency and its relationship to literacy development, with particular emphasis on the intersection of societal power relations, teacher-student identity negotiation, and literacy attainment.

In recent years, he has contributed to debates surrounding early reading instruction, emphasizing that the scientific evidence highlights the need to take account of the impact of literacy socialization in the preschool years. Additionally, effective literacy instruction requires that educators focus their instruction equally on maximizing students' active engagement with literacy and on building students' knowledge of how language works across the curriculum (from sound/symbol relationships in early grades to critical multilingual language awareness as students progress through the grades).

Cummins has collaborated with California educators for many years. He was one of the authors of the 1981 CDE volume, *Schooling and language minority students: A theoretical framework*, and has been a frequent CABE conference presenter since the 1980s. CABE published and distributed two of his books: *Empowering Minority Students* (1989), and *Negotiating Identities: Education for Empowerment in a Diverse Society* (1<sup>st</sup> edition, 1996; 2<sup>nd</sup> edition, 2001). He also collaborated with Dr. Raymond Isola, former principal of Sanchez School in San Francisco's Mission District in writing the book *Transforming Sanchez School: Shared leadership, equity, and evidence* (2019, Caslon Publishing). He has received honorary doctorates from five universities in North America and Europe in recognition of his contributions to issues of educational equity and multilingual education.



Identity, Innovation, & Inspiration

# Keynote Speakers



## LUNCH KEYNOTE

**Dr. Milton Chen**

The "Fierce Urgency of Now" for Multilingual Education

[miltonchensf@gmail.com](mailto:miltonchensf@gmail.com)

At the March on Washington, Rev. King spoke of the "fierce urgency of now." Milton Chen will reflect on his own personal journey to learn Chinese and why state, national, and global issues have created an urgent need for educating more multilingual learners.

Dr. MILTON CHEN 's career has focused on educational innovation, including practices such as effective use of media and technology; teacher and parent education; real-world and project-based curricula; and community partnerships between schools, universities, libraries, and museums. He has been an advocate for global learning and multicultural and multilingual education.

Dr. Chen is senior fellow and executive director, emeritus at The George Lucas Educational Foundation (GLEF), producers of the Edutopia.org website on innovative K-12 learning. He was founding director of the KQED Center for Education (PBS) in San Francisco; director of research at Sesame Workshop in New York; and an assistant professor at the Harvard Graduate School of Education. He is a trustee of the W. K. Kellogg Foundation and former trustee of Sesame Workshop, Panasonic Foundation, and the Golden Gate National Parks Conservancy.

Dr. Chen has received the Fred Rogers Award from Corporation for Public Broadcasting and been named an Honorary National Park Ranger and a Jedi Master by George Lucas!



9

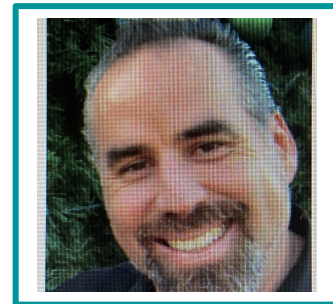
Identity, Innovation, & Inspiration

# Workshop Session I

10:00 - 11:30

MATTHEW HABER (Knights Ferry)

Creating a Linguistically & Culturally Sensitive Mathematics Community



Too often, our Emergent Multilingual Learners are not provided the same opportunities to struggle with challenging and rigorous mathematics as their counterparts. Emergent Multilingual Learners, socioeconomically disadvantaged learners, and students of color are routinely given procedural or rote tasks in order to reduce the struggle. This implicit bias creates a wider gap between Emergent Multilingual Learners and native speakers of English year after year in mathematics. This session focuses on the pedagogical practices and strategies designed to support our Emergent Multilingual Learners. You will learn how to better engage your learners while at the same time, create a linguistically sensitive social environment that addresses cultural and linguistic differences as assets.

MATT HABER has supported math teachers in the California region for 26 years. He taught Emergent Multilingual Learners and coached teachers in the inner cities of Los Angeles for many years. He led initiatives in the San Joaquin County that led to increases in student achievement in mathematics, specifically involving marginalized learners. He currently leads mathematics education in the Oxnard School District where their mission is to ensure all their learners are equipped to thrive in the 21<sup>st</sup> Century. He has published two books dedicated to supporting parents and teachers with the teaching and learning of mathematics. His vision is that all learners have opportunities to learn deep mathematics content and practices through cognitively demanding and engaging mathematics.

## CONTACT INFORMATION

Matthew Haber

Manager, Mathematics, Oxnard School District  
mhaber@oxnardsd.org • 909-731-4195

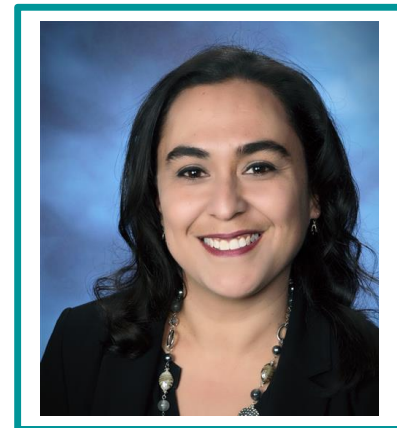
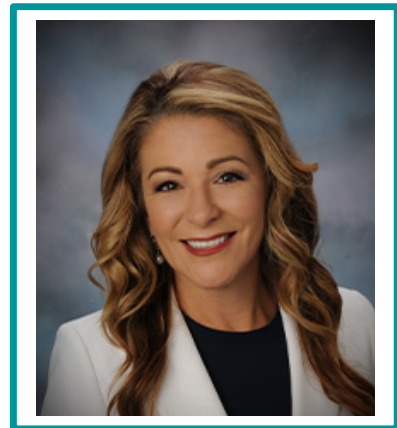
# Workshop Session I

10:00 - 11:30

ANA DEGENNA & ARACELY FOX (Chatom)

Cultivating Excellence: Transforming a District with Shared Vision & Collaboration

The session examines how the Oxnard School District implements its strategic plan to support teachers in fostering desired student traits. It emphasizes a collaborative triad involving central and site administrators, along with teachers on special assignment. Their joint efforts focus on providing impactful coaching, immediate support, and creating valuable resources for classroom teachers. Participants will gain practical strategies for initiating transformative change, empowering them to promote excellence, continuous improvement, and meaningful connections within their educational communities. Ultimately, the goal is to contribute to students showcasing the desired traits outlined in the district's student profile, which includes multilingualism as a goal for all students.



**DR. ANA DEGENNA** is currently the Superintendent of the Oxnard School District, she has also served as the Associate Superintendent of Educational Services, Director of Dual Language Programs, and Principal for the Oxnard School District. In addition, she served as a Director of Curriculum and Instruction for the Ventura County Office of Education. Dr. DeGenna has been involved in Biliteracy education for over 25 years and is committed to ensuring that we continue to develop and maintain an education system that advances opportunities for all children, regardless of race, gender, or socio-economic status while celebrating and encouraging multilingualism and multicultural appreciation.

**DR. ARACELY FOX** is currently the Assistant Superintendent of Educational Services for the Oxnard School District, where she has served for the past twenty-three years in various roles including classroom teacher, teacher on special assignment, school principal, and district administrator. As a first-generation Latinx, Aracely experienced firsthand the struggles and challenges underrepresented students face. Reflecting on her own experience and recognizing the influence others had on her academic journey, Aracely was inspired to work within the education system to become a voice and advocate for all students.



11 Identity, Innovation, & Inspiration

# Workshop Session I

10:00 - 11:30

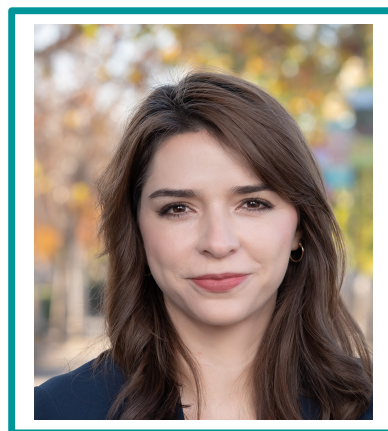
## CONTACT INFORMATION

Anabolena DeGenna  
Superintendent, Oxnard School District  
adegenna@oxnardsd.org

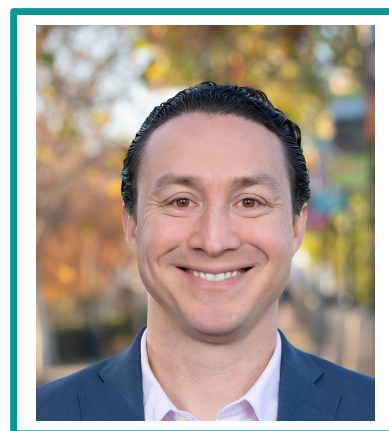
Aracely Fox  
Assistant Superintendent-Educational Services, Oxnard School District  
a2fox@oxnardsd.org

Cristina Salazar and Manuel Buenrostro (Shiloh)  
Advocacy & Action: Opportunities to Make a Difference for EMLs

Come learn about how you can make a difference for EMLs through upcoming state and local opportunities. There is a need for your voice to support implementation of the EL Roadmap, expand bilingual programs, and improve the state accountability system. This workshop will increase your knowledge about state legislative proposals, new research on EL Roadmap implementation, and resources to support local efforts. Participants will be provided with an overview of how to impact change.



**CRISTINA SALAZAR** grew up in California and Jalisco, migrating in accordance with the crop season. She attended Sacramento State University where she majored in International Relations. After graduation, she fell in love with making positive change through her work in the state legislature. She is excited to advocate for EMLs through Californians Together.



**MANUEL BUENROSTRO** is a son of Mexican immigrants and a first generation college graduate with over fifteen years of experience in public education. He has previously worked as an EML teacher at LAUSD, at the US Department of Education as an Obama administration appointee, and at the California School Boards Association.

**META** 12 Identity, Innovation, & Inspiration

# Workshop Session I

10:00 - 11:30

## CONTACT INFORMATION

Cristina Salazar  
Legislative Advocate, Californians Together  
cristina@caltog.org

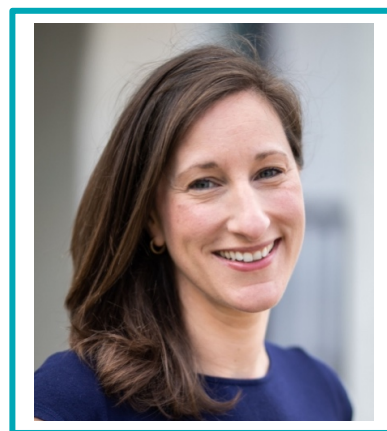
Manuel Buenrostro  
Director of Policy, Californians Together  
manuel@caltog.org

# Workshop Session II

1:00 - 2:30

EMILY WEISS (Graton)  
Supporting Scientific Argumentation Skills  
in Elementary Science Students

A fundamental aspect of science learning is sharing your thinking and reasoning by articulating how evidence supports or refutes your ideas. This cultivates an understanding of how scientists do their work and deepens comprehension of concepts. In this workshop we'll explore high-leverage practices to support EMLs in communicating the richness of their thinking as equal contributors to classroom discourse. Video case studies and resources for immediate classroom application will be introduced.



EMILY WEISS works at the intersection of science and literacy education as a teacher, curriculum developer, professional learning specialist, and agent of systems change. She is the Principal Investigator of *Improving Practice Together*, which supports district improvement of elementary science through a focus on scientific argumentation and teacher leader capacity-building.

**META** 13 Identity, Innovation, & Inspiration

# Workshop Session II

1:00 - 2:30

## CONTACT INFORMATION

Emily Weiss, Science & Literacy Education Specialist

Lawrence Hall of Science, UC Berkeley; Senior Project Director/Head of Youth STEM Pathways

[weisse@berkeley.edu](mailto:weisse@berkeley.edu)

CHARLENE FRIED & JOSÉ LUIS PÉREZ (Knights Ferry)

From Oracy to Academic Literacy: The Bilingual Journey

This workshop will take you on a journey of strategies to share with your students as they navigate their travels from oracy to academic literacy; they are exciting, creative, and relevant, and will promote love, hope, empathy, and community inside and outside the walls of your classroom. The strategies will empower your students to be proud of the languages and cultural assets they bring to your classroom, and how to incorporate these assets into their acquisition of English and their own life journeys. They will empower your students with the skills and motivation to work together to unite the world.

**CHARLNE FRIED** has been a teacher at Sierra Vista High School in Baldwin Park for many years. She has taught English, ELD, Speech, Theatre, and a variety of content area classes in Spanish. After teaching for two years, she was asked to be the first Bilingual Resource teacher at the school. This was an exciting job, but she longed to be back in the classroom with her students; she returned to the classroom, realizing that her passion was to teach and work with students. After she was selected by CAFE as their Bilingual Teacher of the Year, she was invited to teach at CSULA, and later at LMU. She accepted both positions with pleasure. She realized this would not be an administrative job; she would still be actively and passionately teaching. For all these years, she has loved teaching both at the high school



14 Identity, Innovation, & Inspiration

# Workshop Session II

1:00 - 2:30

and the university. It has helped her understand the full circle of teaching and learning and then to share that with both her high school and university students. She loves her students and loves to share all the strategies she has created with other teachers. This is her passion in life.

**JOSÉ LUIS PÉREZ** is a Spanish teacher at Bishop Mora Salesian High School, as well as the Advisor for the Spanish Honor Society and the Varsity Soccer Coach for the school. He coordinates for the Día de los muertos yearly event. Jose graduated from Azusa Pacific University with a degree in Spanish. He has a Master of Arts Degree in Spanish from the University of Salamanca, Salamanca, Spain. He has traveled extensively and loves to share his experiences with his students. Jose loves to teach, coach soccer, and travel, and he rejoices in the opportunity to take his students on spring break travel adventures. Jose spends his summers in Akumal, Quintana Roo, Mexico. These are three of his greatest passions in life.

## CONTACT INFORMATION

Charlene Fried  
Teacher, Sierra Vista High School: English/ELD  
CSULA, Lecturer B, Credential Classes  
LMU, Credential Classes  
cefried704@bpusd.net • 626-484-9934

José Luis Pérez  
Teacher, Bishop Mora Salesian High School, Los Angeles:  
Spanish (AP, 1-1-3, Native/Non-Native)  
jperez@mustangsla.org • 626-484-5119

**ROSA MOLINA** (Chatom)

**We Must all Be Leaders in the Work of Dual Language Immersion Education!**

Dual Language Immersion (DLI) educators are unique in their commitment to biliteracy for the students at their schools who have chosen this educational journey. Dual Language educators must take on a leadership role be it as a DLI classroom teacher or school/district administrators. All TWBI/DLI educators have to be fully committed to create a learning enclave that protects the learning of languages, as well as, the students who are speakers of the target language. Your students, their families and the school community, are relying on your expertise, your language abilities, and your ability to inspire this next generation of students engaged in this biliteracy work. Are you up for the challenge?



15 Identity, Innovation, & Inspiration

# Workshop Session II

1:00 - 2:30

**ROSA G. MOLINA** is the former Executive Director of ATDLE, the Association of Two- Way & Dual Language Education, a national non-profit organization whose primary focus is to provide technical assistance and professional development to TWBI & Dual Language Programs throughout the U.S. She retired as the ED from ATDLE January 31, 2024 but continues to support of ATDLE's work by continuing her fieldwork with schools and districts in development of their TWBI programs.

Rosa worked in K-12 education for 34 years in PreK-12 programs with years of experience as a bilingual classroom teacher, reading specialist, staff developer, and administrator. As principal of the first TWBI Program in San Jose USD, Rosa and her team were awarded a national Title VII Academic Excellence Dissemination Grant as a result of the impressive academic achievement of her students in both languages. This award made their school the training site for TWBI/DLI for California and other states. After the grant funding ended, she served as the Director of Bilingual Programs for SJUSD and spent ten years as an Elementary Director and Assistant Superintendent in two school districts. She is a founding member and first executive director of the Association of Two Way Dual Language Education or ATDLE, whose National Two-Way Bilingual Immersion Conference is now in its 31<sup>st</sup> year and is the only national conference in the U.S. that focuses exclusively on Two-way & Dual Language program implementation, methodology, research and teaching

## CONTACT INFORMATION

Rosa G. Molina • Executive Director, Ret. • Association of Two-way & Dual Language Education (ATDLE)  
twbirosa@gmail.com • 408-6217672 (C)



16 Identity, Innovation, & Inspiration

# About

Multilingual Educators  
Transforming Achievement

## WHO WE ARE

META is a chapter of the California Association for Bilingual Education (CABE), a statewide organization. We support language learners and their educators and parents in the Stanislaus County area. Our purpose is to promote multilingual excellence in our schools and communities since this is a foundational capacity required for 21st century success, academic achievement, and family and societal cohesion. We engage in activities such as professional development to expand the capacity of educators and parents to support the success of Emergent Multilinguals and other language learners, and fundraising to provide student scholarships.

## JOINING META

Full META membership requires that interested individuals first become CABE members by completing the application of the CABE website and selecting META under CHAPTER/AFFILIATE. The cost ranges from \$90 for administrators to \$20 for parents and community members. As a CABE member, membership in META is free.

For those who are not interested in becoming a CABE member but still want to be an official META supporter, META has established a FRIEND OF META membership category. The cost is \$25 annually. While this level of membership does not provide voting rights, it does allow members to enjoy discounted rates for all META-sponsored events. To become a FRIEND OF META, go to the META website and click on the link there to complete the application.

## THE TOVE SKUTNABB-KANGAS STUDENT SCHOLARSHIP PROGRAM

Every year, META offers two or more scholarships for local high school/college students interested in pursuing careers enhanced by multilingual competency. This year, we have named our scholarships in honor of Tove Skutnabb-Kangas. Go to the META website ([Tinyurl.com/METAcabe](http://Tinyurl.com/METAcabe)) in order to learn more and find the application form.

## OUR EXECUTIVE BOARD

Francisca Sánchez, President ([franciscasanchez53@gmail.com](mailto:franciscasanchez53@gmail.com))  
Duarte Silva, Vice-President ([duarte.silva@stanford.edu](mailto:duarte.silva@stanford.edu))  
Liliana Sánchez, Secretary ([ssanchezliliana05@gmail.com](mailto:ssanchezliliana05@gmail.com))  
Delfina Morris, Treasurer ([mmsurfergirl905@aol.com](mailto:mmsurfergirl905@aol.com))

## CONTACT INFORMATION

Website [tinyurl.com/METAcabe](http://tinyurl.com/METAcabe)  
Email [franciscasanchez53@gmail.com](mailto:franciscasanchez53@gmail.com)

# Sponsors

This conference was planned, designed, and organized with the dedicated effort and collaboration of our sponsors. META greatly appreciates their guidance and in kind and direct financial support, and we thank them for their critical contributions.



**Parsec Education** is an educational data analytics and technology company that specializes in data storytelling. With powerful, yet intuitive analytics tools, we support educational agencies in strategic improvement work, data capacity building, and federal and state compliance.

Our **EL dashboard** helps you track acquisition status and multi-year trends. The **ELPAC dashboard** lets you track proficiency by domain and sub-domain to form more precise cohorts. It also tracks multi-year trends and disaggregates by student group.

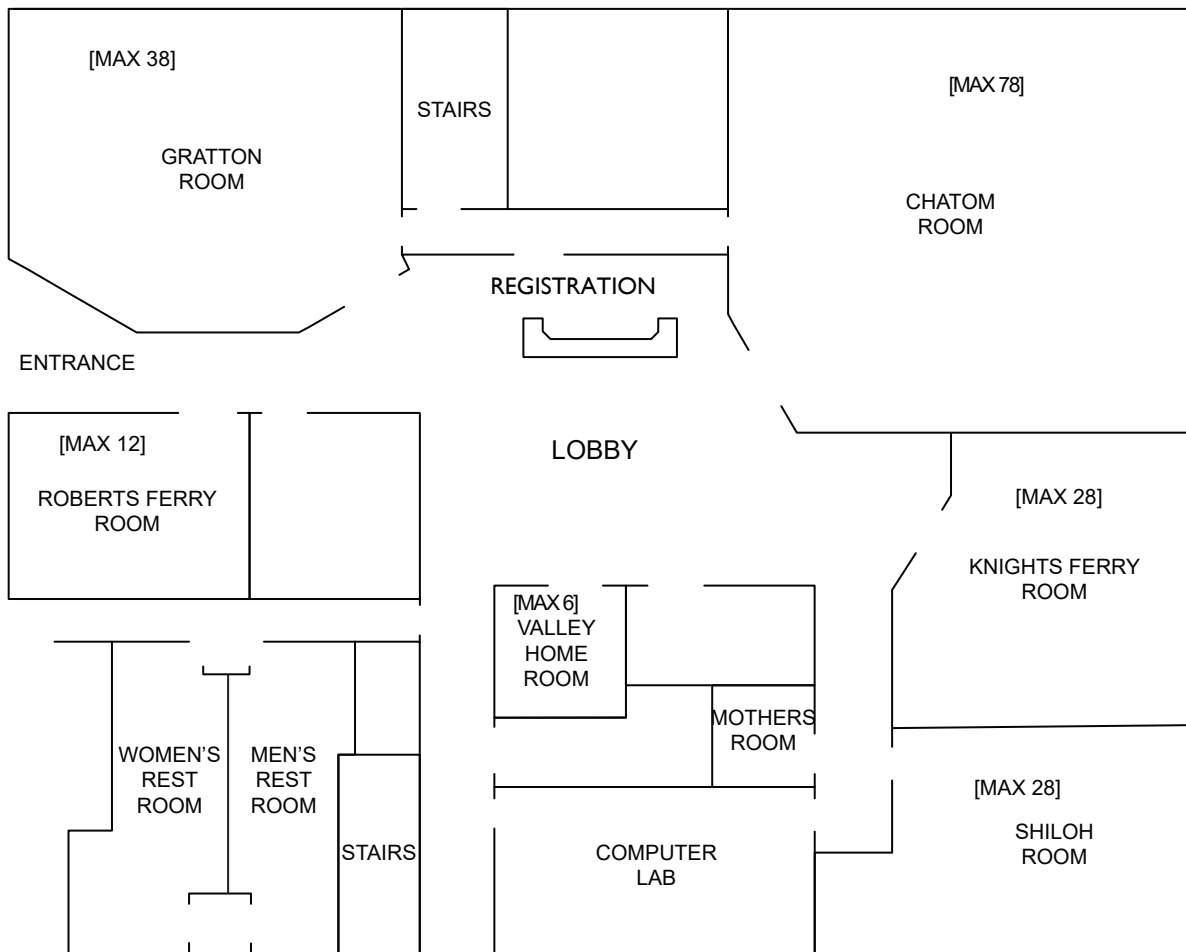
**Parsec Education**  
700 Van Ness, Suite 115  
Fresno, CA 93721  
(559) 235-9602

*"Analysis That's Light Years Ahead."*



18 Identity, Innovation, & Inspiration

# Facility Map



KEYNOTE SESSIONS WILL TAKE PLACE  
IN THE BOARDROOM ON THE 1<sup>ST</sup> FLOOR.

Breakfast and lunch will be available in the 2<sup>nd</sup> floor foyer area.



19 Identity, Innovation, & Inspiration



**Multilingual Educators  
Transforming Achievement**